

### Design Philosophy

**design philosophy**  
 The idea of the project is based on progress and advancement in science, keeping pace with informational developments, and raising awareness of the importance of libraries in our daily lives

### Concept Philosophy

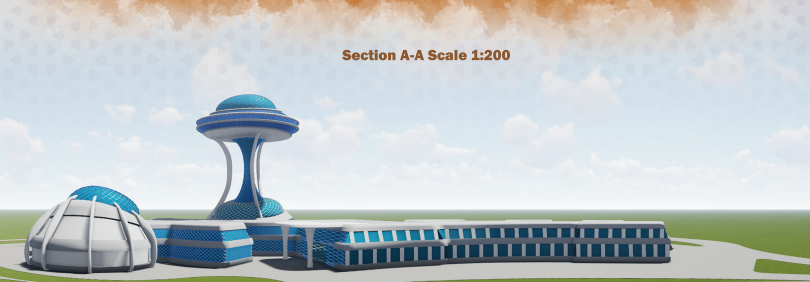
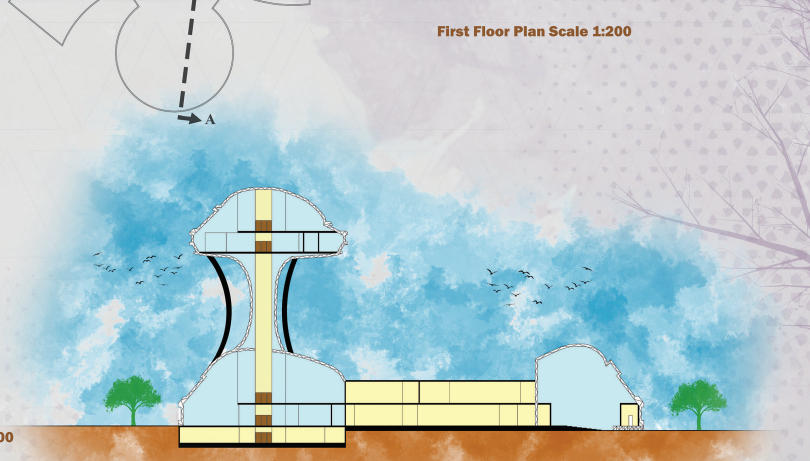
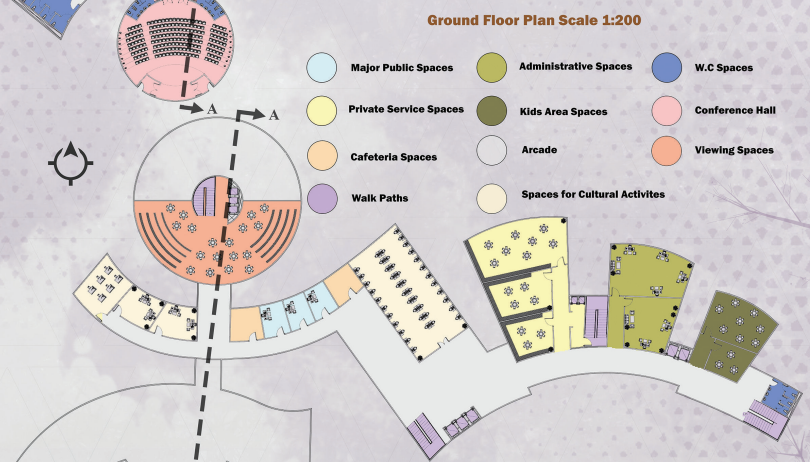
The advantage of the project lies in the fact that the library should be of a high standard due to its distinction and ease of access, and it expresses the lofty and advancement of science



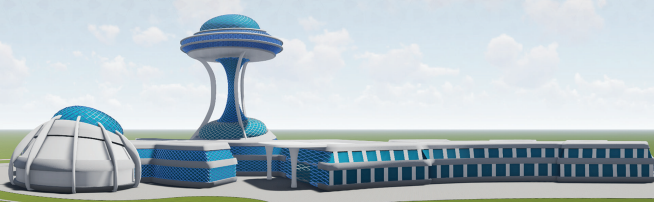
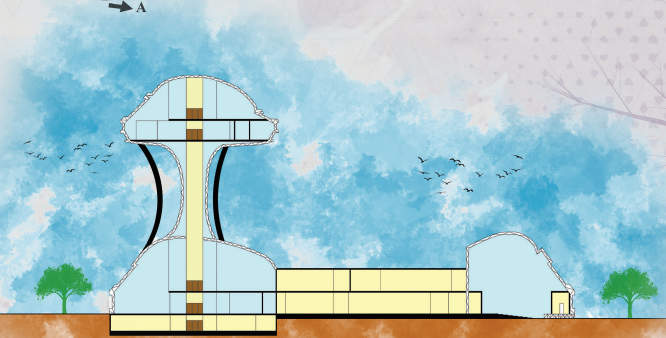
### The project Location

The Kingdom of Saudi Arabia, Jazan, specifically at Jazan University  
 Land area 60,000 square meters

### Site Study



- Major Public Spaces
- Private Service Spaces
- Cafeteria Spaces
- Walk Paths
- Administrative Spaces
- Kids Area Spaces
- Arcade
- Spaces for Cultural Activities
- W.C Spaces
- Conference Hall
- Viewing Spaces





## Energy Study

### TOGGLE DROPDOWN SOLAR CONTROL:

The Solar Gard Stainless Steel series is the world's widely accepted solution to sun related problems. These gray tints have a low reflective quality making them a natural complement to most interior and exterior color schemes. The metallic adhesive laminations and scratch-resistant coating used in this series provide outstanding performance along with durability and continuity, making it the preferred choice for many.

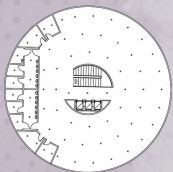
### The stainless steel category in a nutshell:

- Reduced solar heat gain in summer: up to 70%
- Total solar insulation up to: 75%
- Visible light transmission up to: 48%
- Glare Reduction: Up to 90%
- UV Reduction: Available in these grades: >99%



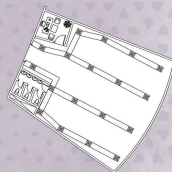
## Lighting and HVAC Study

Library need 300 lux in 1 m<sup>2</sup>  
A = 908 m<sup>2</sup>  
Lumen = lux in 1 m<sup>2</sup> \* A  
= 300lux \* 908  
= 272400 Lumen  
Nof Lumen In 1 Lamps  
= (Lumen OF)/(Nof Lamps IN A)  
= 272400/76 = 3584.2 Lumen

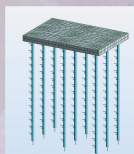
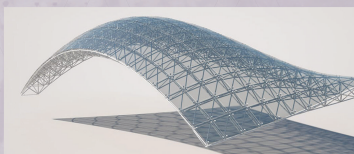


### HVAC SYSTEM

V=A\*H  
=172.7\*4=690.8 m<sup>3</sup>  
(A\*H\*300)/(12000 b+n)= 17.27 ton Ability  
12000 b + n = 1 ton Air-conditioning and convection capacity determination unit  
300= 1 m<sup>2</sup> Air conditioning unit  
1 ton= 1.5 horse  
17.27\*1.5 = 25.905 horse  
The right air conditioner to cool the room



## Structural System



## Shots

