

INFRASTRUCTURES

Physics department

Location: The Department of Physics is located in the Science Faculty at Jazan University besides the Red Sea coast, on the north of the city of Jazan. The department building consists of three floors: the first floor houses teaching labs, the second floor houses teaching classrooms, and the third floor houses the offices of the faculty and staff.

Physics department Infrastructures

Classrooms:

Male Branch:			Female Branch:			Ardha Branch:			Samtha Branch:		
Room	Capacity	Resources	Room	Capacity	Resources	Room	Capacity	Resources	Room	Capacity	Resources
1401	30	Room consists of : 1. Projector 2. Smartboard 3. White board 4. Desk 5. Chairs 6. Window with curtain 7. Centralized air conditioning.	EF-1	30	Room consists of : 1. Projector 2. White board 3. Smartboard 4. Chairs 5. Window 6. Centralized air conditioning.	206	50	Room consists of: 1-Projector 2-white board 3-Desk 4- Chairs 6-Window with curtain 7-Centralized air conditioning	405	70	Room consists of : 1. Projector 2. White board 3. Desk 4. Chairs 5. Window with curtain Centralized air conditioning
1402	30		EF-2	30		207	59		503	120	
1404	25		EF-3	30		208	59		504	120	
1405	25		EF-4	30		211	55		601	70	
1408	40		EF-5	30		212	55		204	30	
1409	40		EF-6	30		213	60		207	35	
1410	100		EF-7	30		218	50		108	350	
1411	40		EF-8	50		219	48				
1412	40		EF-9	30		220	47				
			EF-10	30		221	50				
		EF-19	30	308	52						
		EG-13	100								
		EG-14	50								

Laboratories:

Male Branch:			Female Branch:			Ardha Branch:			Samtha Branch:		
Room	Capacity	Resources	Room	Capacity	Resources	Room	Capacity	Resources	Room	Capacity	Resources
G401	30	Laboratory consists of : 1. Projector 2. Smartboard 3. Desk 4. Chairs 5. Window with curtain 6. Centralized air conditioning 7. Lab equipment	DF-05	22	Laboratory consists of : 1. Projector 2. Smartboard 3. Desk 4. Chairs 5. Window with curtain 6. Centralized air conditioning 7. Lab equipment	102	24	Laboratory consists of : 1. Projector 2. Whiteboard 3. Desk 4. Chairs 5. Window 6. Centralized air conditioning 7. Lab equipment	204	20	Laboratory consists of : 1. Projector 2. Whiteboard 3. Desk 4. Chairs 5. Window with curtain 6. Centralized air conditioning 7. Lab equipment
G404	30		DF-06	30		103	22		207	20	
G407	20		DF-07	30		109A	22				
G408	20		DF-08	22		109B	22				
G411	20		DF-09	22		320	11				
G414	30		DF-10	30							
1403	30		DF-11	12							
1407	20		DF-12	12							
705	20		DF-13	12							
710	20		DF-14	23							
		DF-15	30								
		DS-10	26								

Library:

Male Branch:			Female Branch:			Ardha Branch:			Samtha Branch:		
Room	Capacity	Resources	Room	Capacity	Resources	Room	Capacity	Resources	Room	Capacity	Resources
2400	50	Library consists of : 1. Desks 2. Chairs 3. Window with curtain 4. Centralized air conditioning 5. 14 Computers 6. Scanner 7. Book shelves	Cg-06-8		Library consists of: 1. 3 Desks for library staff 2. 20 Chairs with 3 tables 3. 3 individual desk 4. Nine 9 net cells 5. Sofa 6. 8 eight computers 7. Window with curtain 8. 9. Centralized air conditioning 10. Scanner 11. Book shelves	407	30	Library consists of: 1. Desks 2. Chairs 3. Window with curtain 4. Centralized air conditioning 5. 12 Computers 6. Printer 7. Book Shelves	62	20	1. Desks 2. Chairs 3. Window with curtain 4. Centralized air conditioning 5. 5 Computers 6. Scanner 7. Book shelves

Gym:

Male Branch:			Female Branch:			Ardha Branch:			Samtha Branch:		
Room	Capacity	Resources	Room	Capacity	Resources	Room	Capacity	Resources	Room	Capacity	Resources
G100	50	The gym is composed of Indoor games and health club with modern equipment	Gate 3	-----	The gym is composed of Indoor games and health club with modern equipment W.C	330 111	15 10	1-health club with modern equipment 2- Indoor games	60	50	The gym is composed of modern equipment

Restaurant:

Male Branch:			Female Branch:			Ardha Branch:			Samtha Branch:		
Room	Capacity	Resources	Room	Capacity	Resources	Room	Capacity	Resources	Room	Capacity	Resources
G101	50	Restaurant equipment +chairs and tables	Gate 2		Under initialization	112	50	Restaurant equipment +chairs and tables	----	20	Restaurant equipment +chairs and tables

Lounge room:

Male Branch:			Female Branch:			Ardha Branch:			Samtha Branch:		
Room	Capacity	Resources	Room	Capacity	Resources	Room	Capacity	Resources	Room	Capacity	Resources
2410	50	Staff room for faculty members overlooking the Red Sea, where professors can drink a cup of tea or coffee and relax with other faculty members.	Zone D DG-13		Under furnishing	404	30	Staff room for faculty members, where can drink a cup of tea or coffee and relax with other faculty members.	-----	---	

Prayer Room

Male Branch:			Female Branch:			Ardha Branch:			Samtha Branch:		
Room	Capacity	Resources	Room	Capacity	Resources	Room	Capacity	Resources	Room	Capacity	Resources
G306	100	One room in the ground floor is allocated as prayer room.	Zone CS-04	----	Under initialization	110	50	One room in the ground floor is allocated as prayer room	-----	50	Muslla Prayer Room

Theater

Male Branch:			Female Branch:			Ardha Branch:			Samtha Branch:		
Room	Capacity	Resources	Room	Capacity	Resources	Room	Capacity	Resources	Room	Capacity	Resources
G301	100	1- Chairs 2- White board 3- Projector 4- Speakers 5- microphones	Zone C CS-04 CF-04	----	Under initialization	412	60	1- Chairs 2- White board 3- Projector 4- Speakers microphones	----	60	1- Chairs 2- White board 3- Projector 4- Speakers microphones

Secretary offices

Male Branch:			Female Branch:			Ardha Branch:			Samtha Branch:		
Room	Capacity	Resources	Room	Capacity	Resources	Room	Capacity	Resources	Room	Capacity	Resources
2406	5	It contains 3 desks, 5 chairs, 3 desktops, internet access and a sofa, table, wardrobe for folders, with good lighting, and air conditioning.	Zone C CF-02-14	1	It contains 1 desks, 3 chairs, 1 desktops, internet access and a table, wardrobe for folders, with good lighting, window with curtain and air conditioning	425	2	It contains 2 desks, 2 chairs, 1 desktops, internet access and a sofa, table, 2 Cupboard files, with good lighting, and air .conditioning	79	5	It contains 3 desks, 3 chairs, 3 desktops, internet access and table, wardrobe for folders, with good lighting, and air conditioning.

Nurse Office

Male Branch:			Female Branch:			Ardha Branch:			Samtha Branch:		
Room	Capacity	Resources	Room	Capacity	Resources	Room	Capacity	Resources	Room	Capacity	Resources
MEU01	2	1- permanent doctor 2- permanent nurse 3- 1 desk, 1 bed, shelves for	2 Nurse office Waiting gate staff 1 Waiting gate	2	1- permanent nurse 2- 1 desk, 2 bed, shelves for medicine	104	3	1- 1 desk, 1 bed, shelves for medicine 2- First aid case	59	2	1- permanent nurse 2-1 desk, 1 bed, shelves for medicine

		medicine 4- First aid case	student 2		For each office							3- vFirst aid case
--	--	-------------------------------	-----------	--	-----------------	--	--	--	--	--	--	-----------------------

Staff offices

Male Branch:			Female Branch:			Ardha Branch:			Samtha Branch:		
Room	Capacity	Resources	Room	Capacity	Resources	Room	Capacity	Resources	Room	Capacity	Resources
G407-G409 2406,2418, 2419, 2413,2422, 2414,2719, 2421,2403, 2420,2404,2415, 2419,2723,2417, 2720,2402,2423, 2405,2412,2407	1	There are 21 individual offices for the staff. In each office there are desks, drawers and cabinets. There are good lighting and air conditioning.	CF-01-18 CF-02-15 CF-02-02 CF-02-19 CF-02-18 CF-02-16 CF-02-17 CF-02-21	1	1. There are 8 individual offices for the staff. In each office there are one desk with chair, table and 2 chairs drawers and cabinets.	329 330	6 4	There are 2 individual offices for the staff. In each office there are desks, drawers and cabinets. There are good lighting	65	3	There are good lighting and air conditioning

			CF-01-21	3	2. There are 2 bilateral offices for the staff. In each office there one bilateral desk, 2 chairs and 2 drawers.			and air conditioning				
			CF-01-12									
			CF-01-14									
			CF-02-03	4	3. There are 2 bilateral offices for the staff. In each office there two bilateral desks, 4 chairs and 4 drawers.							
			CF-02-06									
			DG-16	13								

Safety and Security

Male Branch:			Female Branch:			Ardha Branch:			Samtha Branch:		
Room	Capacity	Resources	Room	Capacity	Resources	Room	Capacity	Resources	Room	Capacity	Resources
8 labs	All labs are equipped by : 1- 8 Fire distinguishable 2- 8 Emergency kits 3- 8 Alarm systems	Room	12 Labs	All labs are equipped by : 1- 24 Fire distinguishable 2- 7 Emergency kits 3- 58 Alarm system 4- Emergency exit door		7 labs , rooms and Building corridors	All labs are equipped by : 1- 17 Fire extinguishing box and pump 2- 8 Emergency kits 17 Alarm systems 3- 4 - 7 Sand buckets. Smoke detector 5- 6- 49 Bulbs charging 7- Shares and boards of emergency exits 8 - 4 Fire blankets \		-		Only one room 1- 1 Fire distinguishable 2- 1 Emergency kits 1 Alarm systems



							9- 20Shares and boards of emergency exits Glass 10- breaker. 14 11- 17 Warning alarm 12- 1Control panels				
--	--	--	--	--	--	--	--------------------------------------------------------------------------------------------------------------------------------------------------	--	--	--	--

SPECIAL NEEDS FACILITIES

Male Branch:		Female Branch:		Ardha Branch:		Samtha Branch:	
Facilities/Equipment	Number	Facilities/Equipment	Number	Facilities/Equipment	Number	Facilities/Equipment	Number
Lifts	8	Lifts	16	Lifts	1	-Lifts	-
Ramps	5	Ramps	-	Ramps	3	Ramps	10
		Parking					

Available TV Screen in the College

Male Branch:		Female Branch:		Ardha Branch:		Samtha Branch:	
Location	Number	Location	Number	Location	Number	Location	Number
Physics department	1	Physics department	1	Physics department	1	Physics department	-
Main Entrance	1	-	-	Main Entrance	2	Main Entrance	1
Student 'affairs	1			Student 'affairs	1	Student 'affairs	1

W.C in the Physics Department

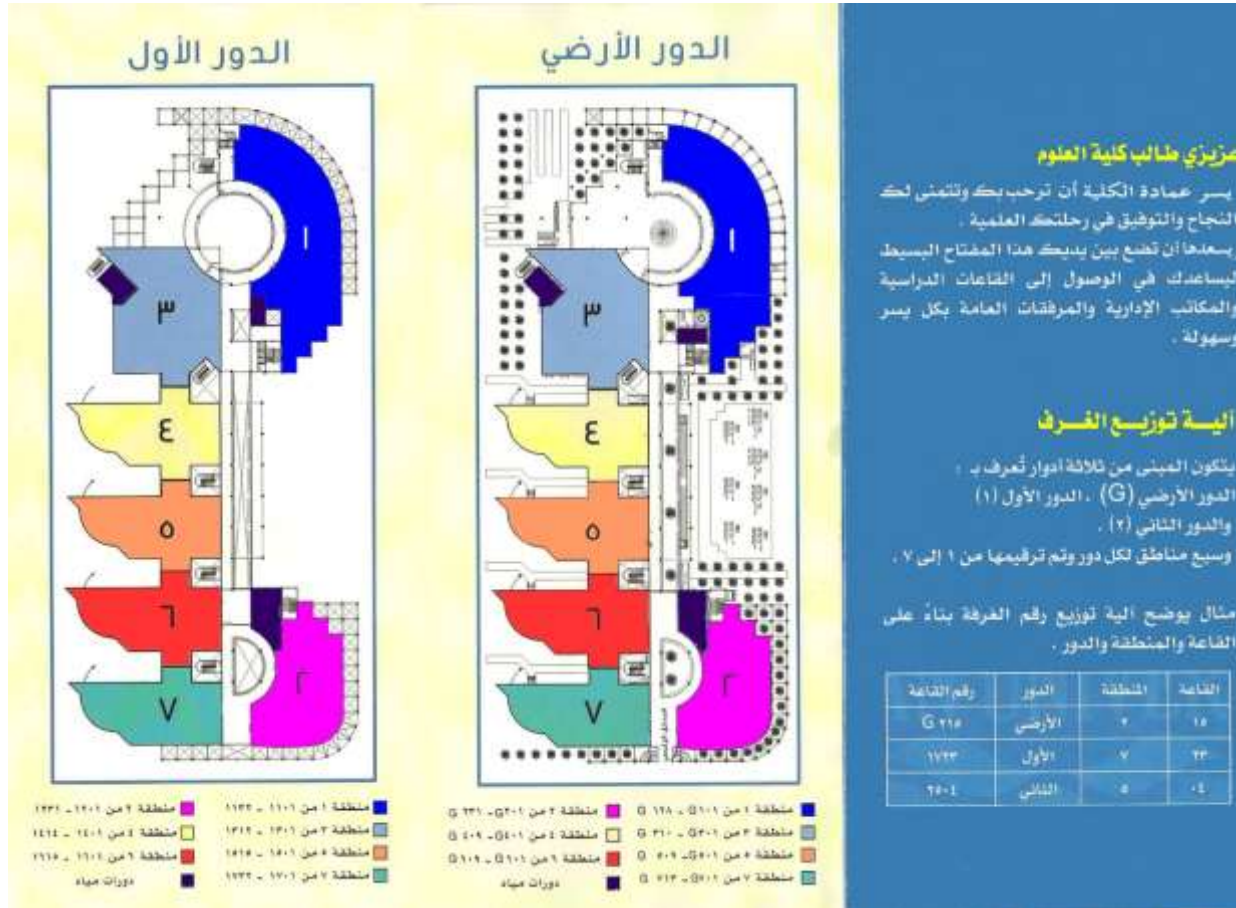
Male Branch:		Female Branch:		Ardha Branch:		Samtha Branch:	
Location	Number	Location	Number	Location	Number	Location	Number
Physics department	6	Physics department	12	Physics department	9	Physics department	-
Students classroom	6	Students classroom	30	Students classroom	10	Students classroom	-
Students Laboratories	6	Students Laboratories	12	Students Laboratories	9	Students Laboratories	-

EMERGENCY EXIT DOORS

Male Branch:	Female Branch:	Ardha Branch:	Samtha Branch:
Number of emergency exit doors	Number of emergency exit doors	Number of emergency exit doors	Number of emergency exit doors
26	32	16	6

BUILDING MAP Male Branch





عزيزي طالب كلية العلوم

يسر عمادة الكلية أن ترحب بك وتتمنى لك النجاح والتوفيق في رحلتك العلمية .
وسعدنا أن تضع بين يديك هذا المفتاح البسيط ليساعدك في الوصول إلى الطاعات الدراسية والمكاتب الإدارية والمرافق العامة بكل يسر وسهولة .

آلية توزيع الغرف

يتكون المبنى من ثلاثة أدوار تُعرف بـ :

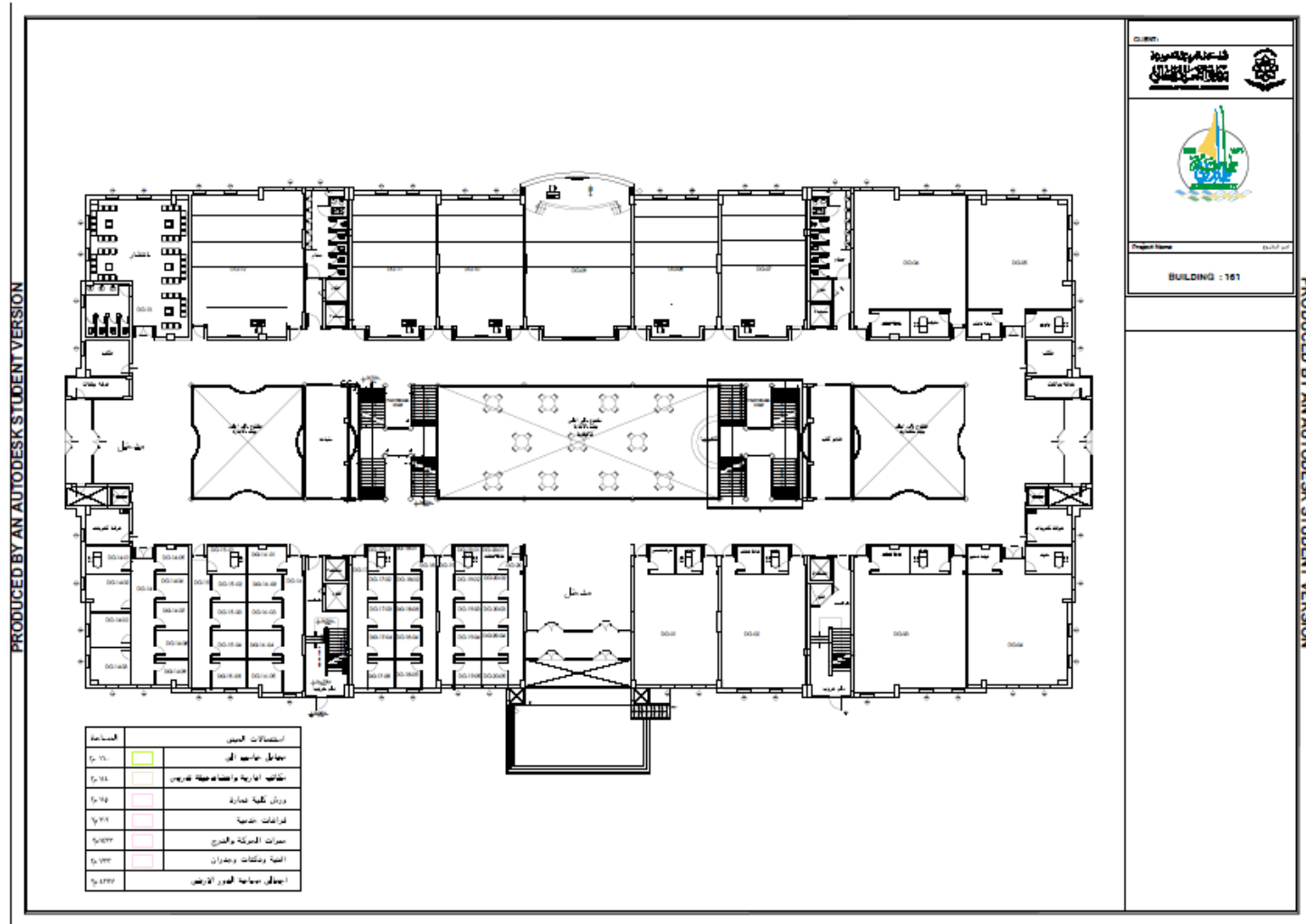
- الدور الأرضي (G) . الدور الأول (1) والدور الثاني (2) .
- وسيع مناطق لكل دور وتم ترقيمها من 1 إلى 7 .

مثال يوضح آلية توزيع رقم الغرفة بناءً على الطابق والمنطقة والدور .

رقم الطابق	الدور	المنطقة	الغرفة
G 218	الأرضي	4	18
1723	الأول	7	23
2601	الثاني	6	01

BUILDING MAP Female Branch

PRODUCED BY AN AUTODESK STUDENT VERSION



BUILDING MAP Samtha Branch

